

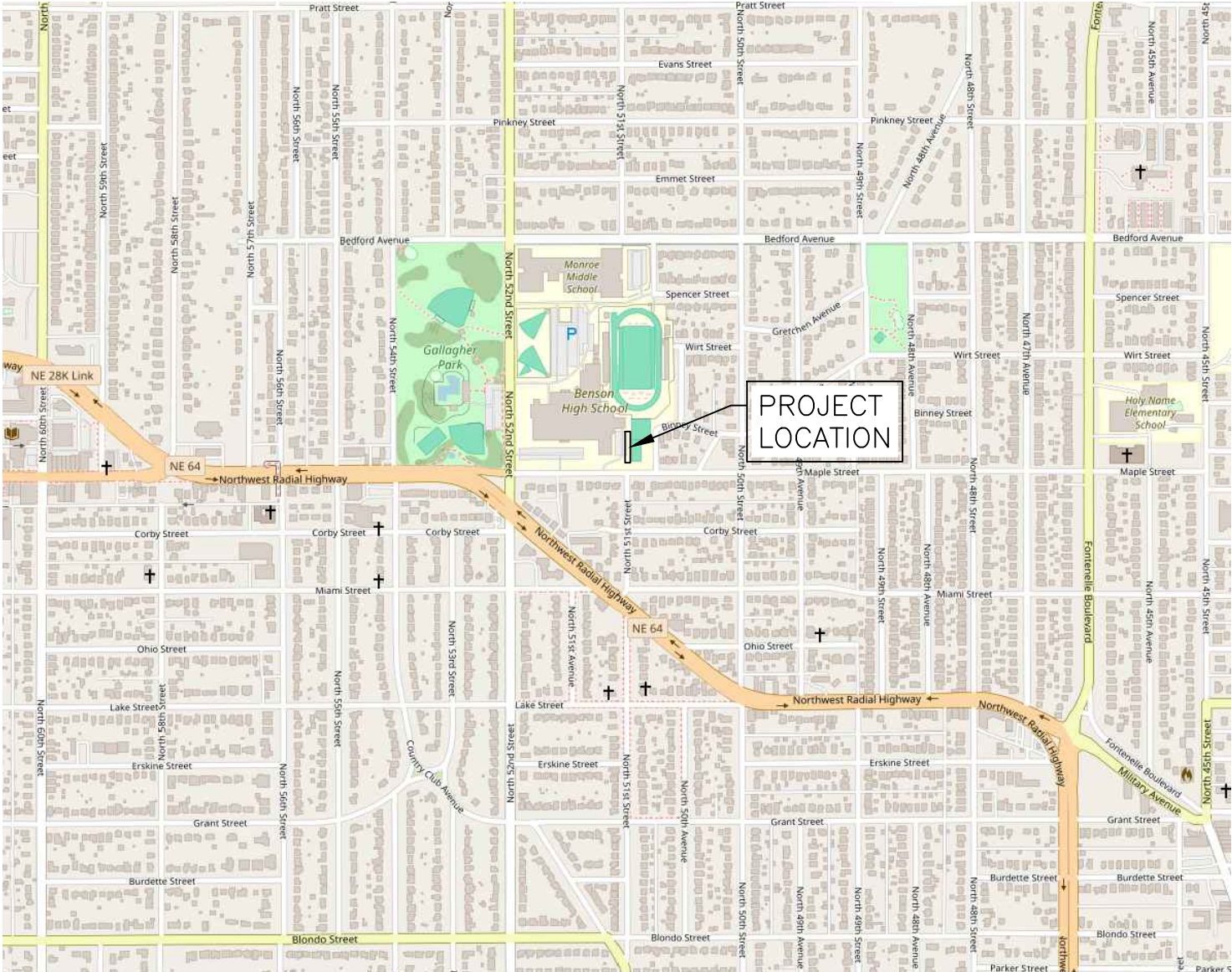
OMAHA PUBLIC SCHOOLS BENSON HIGH SCHOOL TENNIS COURT ACCESS IMPROVEMENTS

APPROXIMATE QUANTITIES

ITEM NO.	BID ITEM DESCRIPTION	APPROXIMATE QUANTITY	FINAL QUANTITY	
1.	MOBILIZATION	1	LS	LS
2.	UTILITY RELOCATION ALLOWANCE	1	LS	LS
3.	EXPLORATORY EXCAVATION	2	HR	LS
4.	FURNISH AND INSTALL EROSION PREVENTION BLANKET	2,050	SF	LS
5.	CONSTRUCT SILT FENCE	225	LF	LF
6.	MAINTAIN SILT FENCE	225	LF	LF
7.	SAWCUT PAVEMENT - FULL DEPTH	70	LF	LF
8.	REMOVE PAVEMENT	53	SY	SY
9.	REMOVE SIDEWALK	140	SF	LF
10.	REMOVE SILT FENCE	225	LF	LF
11.	REMOVE HANDRAIL	4	LF	SY
12.	CONSTRUCT 7" PC CONCRETE PAVEMENT WITH 6" INTERGRAL CURB	15	SY	LF
13.	CONSTRUCT 5" PC CONCRETE SIDEWALK	1,705	SF	LS
14.	CONSTRUCT PC CONCRETE CURB WALL	250	LF	SF
15.	CONSTRUCT PC CONCRETE CURB RAMP	15	SF	LF
16.	CONSTRUCT 6" WIDTH PC CONCRETE CURB	40	LF	LF
17.	CONSTRUCT THICKENED EDGE	106	LF	LF
18.	FURNISH AND INSTALL HANDRAIL	230	LF	SF
19.	CONDITION SOIL	2,050	SF	SF
20.	INSTALL GRANULAR PRE EMERGENT WEED CONTROL	2,050	SF	SF
21.	INSTALL LAWN SEED - TYPE A	2,050	SF	SF

GENERAL NOTES

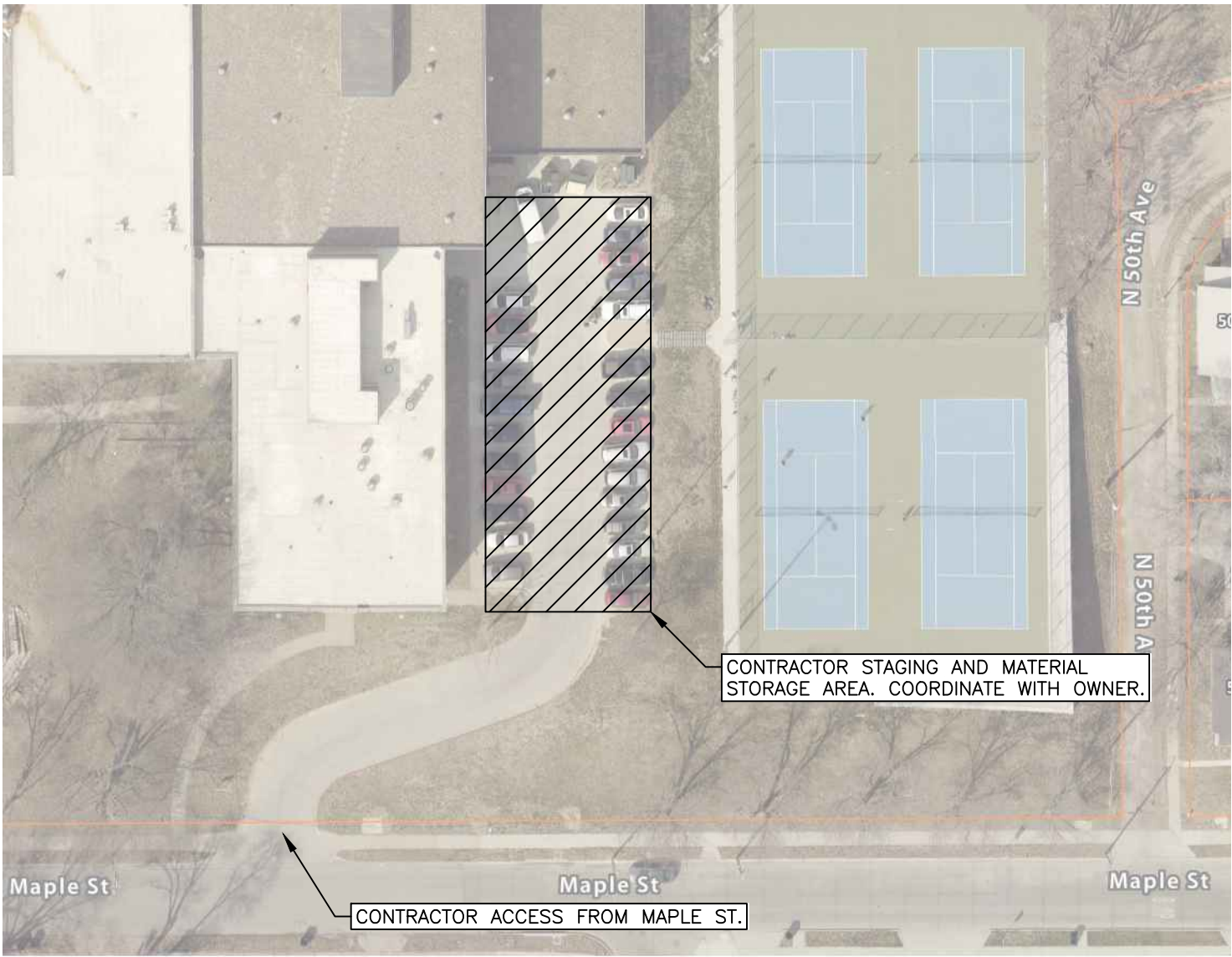
1. WORK TO BEGIN ON OR AFTER JUNE 2 WITH SUBSTANTIAL COMPLETION BY JULY 31.
2. ALL SITE WORK SHALL BE IN ACCORDANCE WITH THE CITY OF OMAHA "STANDARD SPECIFICATIONS FOR PUBLIC WORKS CONSTRUCTION", 2024 EDITION AND ANY REVISIONS OR AMENDMENTS THERETO SHALL APPLY TO THIS PROJECT. EXCEPT AS MODIFIED BY THESE SPECIFICATIONS, SPECIAL CONDITIONS, AND/OR THE CONSTRUCTION DRAWINGS.
3. EXISTING UTILITIES ARE SHOWN AS A CONVENIENCE FOR THE CONTRACTOR. THE LOCATIONS OF ALL AERIAL AND UNDERGROUND UTILITIES MAY NOT BE INDICATED IN THESE PLANS. THE CONTRACTOR SHALL NOTIFY ALL UTILITY COMPANIES 48 HOURS BEFORE WORK IS STARTED TO VERIFY UTILITY LOCATIONS (ONE CALL 811).
4. BARRICADES SHALL CONFORM TO OMAHA PUBLIC WORKS "BARRICADING STANDARDS, SPECIFICATIONS, METHODS & MATERIALS", AND/OR THE "MANUAL ON UNIFORM TRAFFIC CONTROL DEVICES".
5. THE CONTRACTOR SHALL PROVIDE THE ENGINEER WITH A CONSTRUCTION RECORD DRAWING INDICATING ALL CHANGES IN GEOMETRY, GRADES, ELEVATIONS OR MATERIAL ON THE PROJECT PRIOR TO FINAL ACCEPTANCE.
6. THE CONTRACTOR IS RESPONSIBLE FOR OBTAINING ALL PERMITS REQUIRED TO COMPLETE THIS PROJECT AND IS RESPONSIBLE FOR THE PAYMENT OF ALL FEES ASSOCIATED WITH THESE PERMITS.
7. THE CONTRACTOR SHALL CONTACT THE SOILS ENGINEER TO OBSERVE THE SUBGRADE PRIOR TO PLACING PAVEMENT TO DELINEATE ANY AREAS WHERE SUBGRADE OVEREXCAVATION MAY BE REQUIRED.
8. SEE PLAN SHEETS FOR ADDITIONAL NOTES.



LOCATION MAP

INDEX OF SHEETS

SHEET NUMBER	SHEET TITLE	ORIGINAL DATE	REVISION DATE
1	COVER	MARCH 14, 2025	
2	LEGEND	MARCH 14, 2025	
3	TOPOGRAPHIC SURVEY (FIPO)	MARCH 14, 2025	
4	REMOVAL & GRADING PLAN	MARCH 14, 2025	
5	PAVING PLAN & CONSTRUCTION DETAILS	MARCH 14, 2025	



SITE ACCESS AND STAGING MAP

U:\Engineering\0124200-OPS Benson HS Tennis Court ADA Access\Drawings\CONSTRUCTION DRAWINGS\0124200-SITE-CD.dwg, 3/14/2025, 2:22:01 PM, JAMIE DENNELL, LAMP RYNearson

EXISTING					
AIR		SANITARY CLEAN OUT		WATER WARNING SIGN	
BUILDING OVERHANG		SANITARY MANHOLE		AUTO SPRINKLER BUILDING	
CABLE		SEWER WARNING SIGN		FIRE HYDRANT	
CONDUIT		SEPTIC TANK		POST INDICATOR VALVE	
CONSTRUCTION FENCE		AREA INLET ROUND		YARD HYDRANT	
CREEK FLOW LINE		AREA INLET SQUARE		IRRIGATION CONTROL VALVE	
CREEK FLOW DIRECTION		GRATE INLET		IRRIGATION SPRINKLER HEAD	
DRAIN TILES		GRATE INLET W/ HOOD		WELL	
ELECTRIC		STORM MANHOLE		MONITORING WELL	
EFF LINE		STORM PIPE END		TABLE	
FENCE		4' CURB INLET		SATELLITE DISH	
FENCE - BARBED WIRE		CURB INLET LEFT		MAILBOX	
FENCE - STEEL		CURB INLET RIGHT		MISCELLANEOUS POINT	
FENCE - WIRE		DOWN SPOUT/ROOF DRAIN		VENT	
FENCE - WOOD		FLARED END SECTION		TOWER	
FIBER OPTICS		CONTINUE SYMBOL		PROPANE TANK	
FLOOD PLAN		CABLE MANHOLE		FLAGPOLE	
FLOW ARROW		CABLE PEDESTAL		AIR CONDITIONING UNIT	
FLOW LINE		CABLE PULLBOX		DRINKING FOUNTAIN	
FORCE MAIN		LIGHT POLE		BBQ PIT	
GAS		YARD LIGHT		BENCH	
GRAVEL AND DIRT EDGE		GROUND LIGHT		BOLLARD	
GUARD RAIL		BLDG MOUNTED LIGHT		BORE HOLE	
IRRIGATION		STREET LIGHT		COLUMN ROUND	
MAIN DRAIN LINE		POWER POLE		COLUMN SQUARE	
NON POTABLE WATER		H STRUCTURE		VACUUM	
OIL		H STRUCTURE W/ TRANSFORMER		TREE DECIDUOUS	
OIL AND GAS		ELECTRIC MANHOLE		TREE CONIFEROUS	
OVERHEAD POWER		ELECTRIC METER		BUSH	
OVERHEAD TELEPHONE		ELECTRIC PEDESTAL		BOULDER	
OVERHEAD UTILITY		ELECTRIC PULLBOX		ARROW LEFT	
POWER		ELECTRIC TRANSFORMER		ARROW RIGHT	
RAILROAD TRACKS		ELECTRIC VAULT		ARROW STRAIGHT	
RAW WATER		ELECTRIC WARNING SIGN		STRIPING "ONLY"	
RECIRCULATION		FIBER OPTIC MANHOLE		BICYCLE STRIPING	
ROOF DRAIN		FIBER OPTIC PULL BOX		HANDICAP SYMBOL	
SANITARY SEWER		FIBER OPTIC VAULT		TRAFFIC SIGNAL	
STORM SEWER		FIBER OPTIC PEDESTAL		TRAFFIC SIGNAL PEDESTAL	
STREAM		FIBER OPTIC WARNING SIGN		TRAFFIC SIGNAL PULL BOX	
TELEPHONE		FUEL TANK		PARKING METER	
UNDER DRAIN		FUEL CAP		SIGN	
UNIDENTIFIED UTILITY		FUEL PUMP		STOP SIGN	
UTILITY		GAS CURB STOP		YIELD SIGN	
VEGETATION LINE		GAS MANHOLE		RR CROSSING ARM	
WATER		GAS METER		BENCHMARK	
WATERS EDGE		GAS VALVE		TEMPORARY BENCHMARK	
RECORD		TELEPHONE MANHOLE		ROW MARKER	
AIR		TELEPHONE PEDESTAL		CONTROL POINT	
CABLE		TELEPHONE PULLBOX		MONUMENT FOUND	
ELECTRIC		UNIDENTIFIED MANHOLE		MONUMENT SET	
FIBER OPTIC		UNIDENTIFIED PEDESTAL		WITNESS CORNER	
GAS		UNIDENTIFIED VALVE		SECTION CORNER TIE	
SANITARY SEWER		UNIDENTIFIED PULLBOX		SECTION CORNER	
STORM SEWER		WATER CURB STOP			
TELEPHONE		WATER MANHOLE			
UNDERGROUND POWER		WATER METER			
UTILITY		WATER VALVE			
WATER					

UTILITY	
AIR	
CABLE	
CONDUIT	
CONSTRUCTION FENCE	
DRAIN TILES	
FENCE	
FENCE - BARBED WIRE	
FENCE - STEEL	
FENCE - WIRE	
FENCE - WOOD	
FIBER OPTICS	
FLOW ARROW	
FORCE MAIN [SINGLE LINE]	
FORCE MAIN [DOUBLE LINE]	
GAS	
GRAVEL AND DIRT EDGE	
IRRIGATION	
LIMITS OF CONSTRUCTION	
NON POTABLE WATER	
OIL	
OIL AND GAS	
POWER	
RAW WATER	
ROOF DRAIN	
SANITARY SEWER [SINGLE LINE]	
SANITARY SEWER [DOUBLE LINE]	
SANITARY SEWER SERVICE	
SANITARY SERVICE RISER	
STORM SEWER [SINGLE LINE]	
STORM SEWER [DOUBLE LINE]	
TELEPHONE	
UNDER DRAIN	
UTILITY	
WATER [SINGLE LINE]	
WATER [DOUBLE LINE]	
DROP MANHOLE	
SLOTTED UNDER DRAIN	
WATER	
AIR TAP	
FIRE HYDRANT	
TEE	
BEND	
REDUCER	
VALVE GATE	
MANHOLE	
FLARED END SECTION	
CURB INLET	
AREA INLET	
GRATE INLET	
GRADING	
CONTOUR	
FUTURE CONTOUR	
EXISTING CONTOUR	
WETLANDS AREA NOT TO BE DISTURBED	
FILL AREA	
STABILIZED ACCESS ROAD	
VEGETATED BUFFER STRIP	
SPOT ELEVATION	
LIMITS OF DISTURBED AREA	
FLOOD PLAN	

PROPOSED	
DRAINAGE	
100 YEAR	
500 YEAR	
2 YEAR EGL	
5 YEAR EGL	
10 YEAR EGL	
100 YEAR EGL	
2 YEAR HGL	
5 YEAR HGL	
10 YEAR HGL	
100 YEAR HGL	
FLOOD WAY	
RIDGE	
FLOW PATH	
DRAINAGE AREA NAME	
DRAINAGE AREA RUNOFF COEFFICIENT	
DRAINAGE BASIN DELINEATION	
DRAINAGE SUB BASIN DELINEATION	
TIME OF CONCENTRATION DRAINAGE PATH	
EROSION CONTROL	
EARTH BERM	
EARTH DIVERSION	
EROSION CONTROL LOG	
FILL DIVERSION	
INTERCEPTOR DIKE	
INTERCEPTOR SWALE	
LEVEL SPREADER	
LEVEL TERRACE	
SEDIMENT CONTROL LOG	
SILT FENCE	
STRAW WATTLE	
TEMPORARY DITCH	
BIORETENTION GARDEN	
WATTLE	
VEHICLE TRACKING PAD	
TEMPORARY SEEDING	
STRAW HAY BALE	
SLOPE PROTECTION	
PERMANENT SEEDING	
INLET PROTECTION	
PAVEMENT	
PAVEMENT	
PCC CURB AND GUTTER	
RETAINING WALL	
X" PCC PAVEMENT	
ASPHALT PAVEMENT	
SIDEWALK PAVEMENT	
PAVING BARRICADE	
BUILDING	
PARKING STALL COUNT	
FLOW LINE	
JOINT A	
JOINT B	
JOINT D	
JOINT E	
JOINT F	
JOINT G	
JOINT H	
JOINT JLC-K	
JOINT JLH-S	

PLATTING	
PROPERTY/BOUNDARY LINE	
PROPOSED LOT LINE	
ADJACENT LOT LINE	
SECTION LINE	
EASEMENT	
MONUMENT SET	
MONUMENT FOUND	
SECTION CORNER	
COMPUTED CORNER	
WITNESS CORNER	

GENERAL ABBREVIATIONS			
ADA	AMERICANS WITH DISABILITIES ACT	(R)	RECORD DIMENSION
ASPH	ASPHALT	RB	REBAR
BC	BACK OF CURB	RCP	REINFORCED CONCRETE PIPE
BOSW	BACK OF WALK	ROW	RIGHT OF WAY
BP	BOTTOM OF PIPE	S	SOUTH
BW	BOTTOM OF WALL	SF	SQUARE FEET
(C)	COMPUTED DIMENSION	SS	SANITARY SEWER
CATV	CABLE TELEVISION	ST	STORM
CF	CUBIC FOOT	STA	STATION
CL	CENTERLINE	STD	STANDARD
CMP	CORRUGATED METAL PIPE	SW	SIDEWALK
CONC	CONCRETE	T	TELEPHONE
CP	CONTROL POINT	TC	TOP OF CURB
CPP	CORRUGATED PLASTIC PIPE	TOF	TOP OF FOUNDATION
CY	CUBIC YARD	TOG	TOP OF GRADE
DIA	DIAMETER	TOI	TOP OF ISLAND
DIP	DUCTILE IRON PIPE	TP	TOP OF PAVEMENT
E	EAST	TS	TOP OF SLAB
ELEV	ELEVATION	TW	TOP OF WALL
EOG	EDGE OF GRAVEL	TYP.	TYPICAL
FES	FLARED END SECTION	VERT	VERTICAL
FF	FINISH FLOOR ELEVATION	W	WEST
FG	FINISHED GRADE	WQCV	WATER QUALITY CAPTURE VOLUME
FH	FIRE HYDRANT	YPC	YELLOW PLASTIC CAP
FL	FLOWLINE	TP	TOP OF PAVEMENT
G	GUTTER	TS	TOP OF SLAB
GB	GRADE BREAK	TW	TOP OF WALL
HP/LP	HIGH POINT/LOW POINT	TYP.	TYPICAL
HORIZ	HORIZONTAL	VERT	VERTICAL
HPC	HORIZONTAL POINT OF CURVATURE		
HPI	HORIZONTAL POINT OF INTERSECTION		
HPT	HORIZONTAL POINT OF TANGENCY		
HPCC	HORIZONTAL POINT OF COMPOUND CURVATURE		
HPRC	HORIZONTAL POINT OF REVERSE CURVATURE		
IE	INVERT ELEVATION		
LF	LINEAR FEET		
(M)	MEASURED DIMENSION		
MH	MANHOLE		
ME	MATCH EXISTING		
N	NORTH		
N.T.S.	NOT TO SCALE		
OT	OPEN TOP PIPE		
(P)	PLAT DIMENSION		
PL	PROPERTY LINE		
PT	PINCHED TOP PIPE		
P.V.C.	POLYVINYL CHLORIDE		
PVC	POINT OF VERTICAL CURVE		
PVI	POINT OF VERTICAL INTERSECTION		
PVT	POINT OF VERTICAL TANGENCY		
X 1020.12	SPOT ELEVATION		

LAMP RYNEARSON

LAMP RYNEARSON.COM

OMAHA, NEBRASKA
14710 W. DODGE RD., STE. 100 (402) 496-2498
NE AUTHORIZATION NO.: CA0130

FORT COLLINS, COLORADO
4718 INNOVATION DR., STE. 100 (970) 226-0342

KANSAS CITY, MISSOURI
9001 STATE LINE RD., STE. 200 (816) 361-0440
MO AUTH. NO.: E-2013011903 | LS-2015043127

JAMESON J DENNELL
LA-442

LEGEND

OPS BENSON HS TENNIS COURT ACCESS IMPROVEMENTS
5120 MAPLE ST, OMAHA, NE 68104

811

ALL UTILITIES ARE SHOWN BASED ON THE INFORMATION AVAILABLE TO THE ENGINEER. THERE IS NO GUARANTEE ALL FACILITIES ARE SHOWN OR THAT THE LOCATION, DEPTH, AND SIZE OF EACH FACILITY IS CORRECT. THE CONTRACTOR IS RESPONSIBLE FOR LOCATING ALL UTILITIES AND SERVING LINES PRIOR TO CONSTRUCTION.

Know what's below.
Call before you dig.

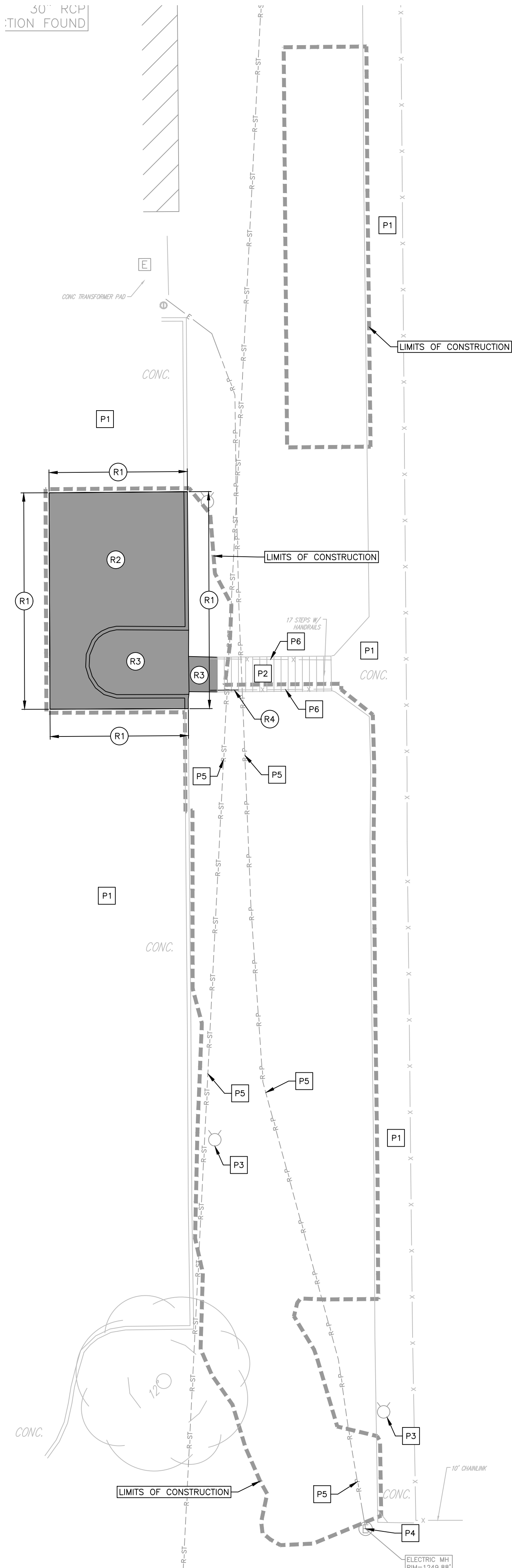
REVISIONS

DESIGNER / DRAFTER
JAMIE DENNELL
DATE
MARCH 14, 2025
PROJECT NUMBER
0124200.01-020
BOOK AND PAGE

SHEET

2 OF 5

30" RCP
TION FOUND



1 REMOVAL PLAN

REMOVAL NOTES

- THE CONTRACTOR SHALL NOTIFY THE OWNER 72 HOURS IN ADVANCE IF EXISTING UTILITIES CONFLICT WITH NEW CONSTRUCTION OR IF TEMPORARY OUTAGES ARE ANTICIPATED, INCLUDING BUT NOT LIMITED TO WATER, GAS, POWER, CABLE, TELEVISION AND TELEPHONE.
- THE CONTRACTOR SHALL PROTECT ALL EXISTING UTILITIES AND SHALL BE RESPONSIBLE FOR ANY AND ALL DAMAGES TO UTILITIES THAT ARE PERMITTED TO REMAIN IN PLACE. DAMAGES DUE DIRECTLY OR INDIRECTLY TO THE CONTRACTOR'S OPERATIONS SHALL BE PROMPTLY REPAIRED TO THE SATISFACTION OF THE ENGINEER/ARCHITECT AND THE OWNER OF THE PROPERTY, OR SHALL MAKE PAYMENT TO SUCH OWNERS FOR REPAIRS AS MAY BECOME NECESSARY ON ACCOUNT OF DAMAGES THAT ARE DUE TO THEIR OPERATIONS.
- THE CONTRACTOR SHALL MAKE THEMSELVES AWARE OF ALL OF THE PERMANENT AND TEMPORARY UTILITY APPURTENANCES IN THEIR PRESENT AND/OR RELOCATED POSITIONS. NO ADDITIONAL COMPENSATION WILL BE ALLOWED FOR ANY DELAYS, INCONVENIENCE, OR DAMAGE SUSTAINED DUE TO INTERFERENCE FROM THE SAID UTILITY APPURTENANCES OR THE OPERATION OF DISCONNECTING THEM, INCLUDING THE POSSIBILITY OF UNCOVERING UTILITIES THAT HAVE BEEN ABANDONED AND/OR ARE NOT INDICATED.
- ALL DEMOLITION RUBBISH WILL BE REMOVED FROM THE SITE BY A LICENSED TRUCKING FIRM, IN COVERED TRUCKS, AND TAKEN TO A LICENSED LANDFILL. ALL THIS WILL BE PAID FOR BY THE CONTRACTOR AND WILL BE PART OF THE CONTRACTOR'S BASE BID.
- COORDINATION WITH FIRE DEPARTMENTS AND UTILITY COMPANIES SHALL BE THE RESPONSIBILITY OF THE CONTRACTOR.
- NO BURNING OF MATERIALS WILL BE PERMITTED.
- THE OWNER SHALL BE GIVEN 5 BUSINESS DAYS NOTICE BEFORE ANY ENTRANCE OR ACCESS DRIVE CLOSURES.
- THE LIMITS OF DEMOLITION SHOWN ON THE DRAWINGS ARE APPROXIMATE. THE EXACT LIMITS WILL BE MARKED IN THE FIELD BY THE ENGINEER.
- CONTRACTOR SHALL FIRST COORDINATE REMOVAL OF ANY EXISTING UTILITY WITH UTILITY OWNER (GAS, WATER, POWER, ETC.). ALL TELEPHONES, WATER, ELECTRIC AND GAS METERS, AND ASSOCIATED EQUIPMENT SHALL REMAIN THE PROPERTY OF THE VARIOUS UTILITY COMPANIES.
- EXISTING PAVEMENT SHALL BE SAW-CUT AT LOCATIONS INDICATED AS REQUIRED FOR PAVEMENT REMOVAL. THE SAW-CUT SHALL BE MADE TO THE FULL DEPTH OF THE PAVEMENT.
- WHERE INDICATED THE EXISTING PAVEMENT SHALL BE REMOVED AND LEGALLY DISPOSED OF OFF THE PROJECT SITE. CONTRACTOR SHALL NOT USE A HEAVY BALL FOR BREAKING UP OF EXISTING PAVEMENT OVER PUBLIC WATER AND GAS MAINS.
- EXISTING TREES OUTSIDE OF LIMITS OF CONSTRUCTION SHALL NOT BE DISTURBED. ANY WORK WITHIN DRIP LINE OF TREE SHALL BE BY HAND.

UTILITY CONTACTS

SANITARY SEWER:	CITY OF OMAHA SEWER MAINTENANCE	402-444-5220
POWER:	OPPD NATE GASKILL	531-226-5835 (OFFICE) 402-990-1801 (CELL)
	JEREMY CASON	531-226-5846 (OFFICE) 712-301-4228 (CELL)
TELEPHONE:	CENTURY LINK BUSINESS MARKETS GROUP	800-777-9594
CABLE TV:	COX BUSINESS SERVICES	402-934-6000
WATER:	CONTRACTOR SERVICES MUD	402-504-7014
GAS:	CONTRACTOR SERVICES MUD	402-504-7014
PRIVATE:	OPS PHIL CONNATSER	402-510-5544

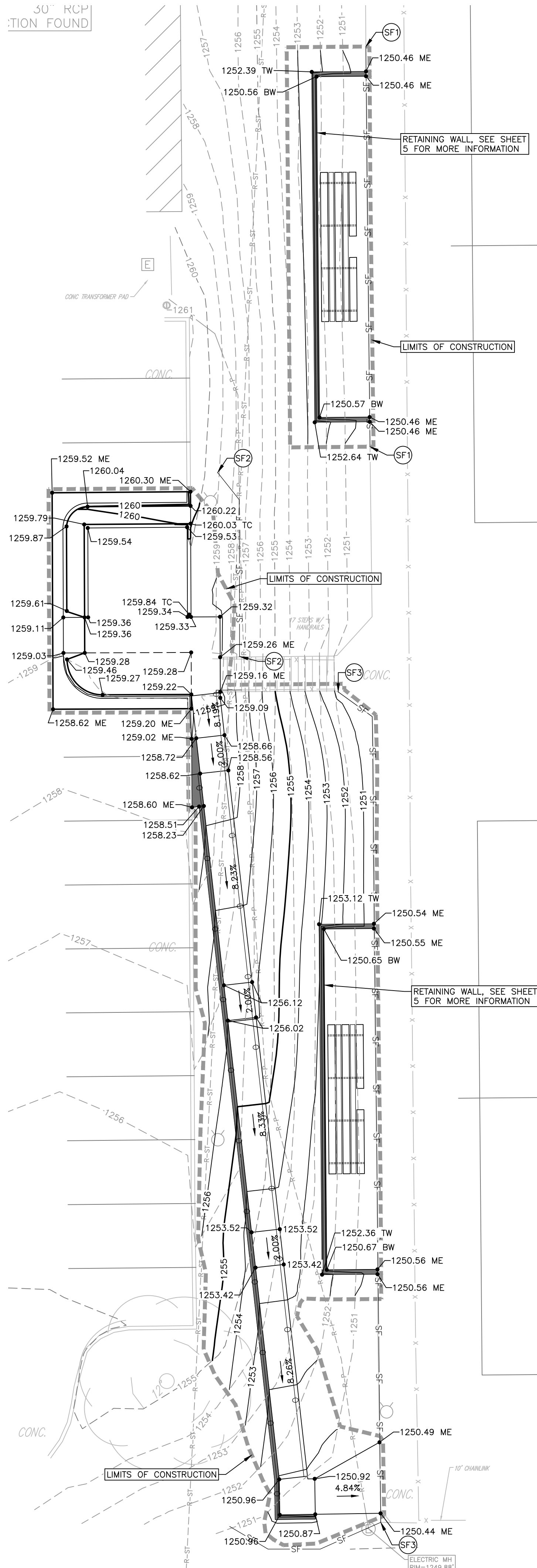
REMOVAL KEYNOTES

- R1 SAWCUT PAVEMENT, FULL DEPTH.
R2 REMOVE PAVEMENT.
R3 REMOVE SIDEWALK.
R4 REMOVE HANDRAIL. ONLY REMOVE DAMAGED RAIL, FIELD VERIFY EXTENTS AND CONFIRM WITH ENGINEER.

PROTECTION KEYNOTES

- P1 PROTECT PAVEMENT.
P2 PROTECT STAIRS.
P3 PROTECT LIGHT POLE.
P4 PROTECT ELECTRIC MANHOLE.
P5 PROTECT UTILITY.
P6 PROTECT HANDRAIL.

30" RCP
TION FOUND



2 GRADING PLAN

ELEVATION NOTES

- PROPOSED CONTOURS ARE FINISHED GRADE/TOP OF PAVEMENT ELEVATIONS. NOT SUBGRADE ELEVATIONS.
- ALL SPOT ELEVATIONS IN PAVEMENT ARE TOP OF SLAB UNLESS NOTED OTHERWISE.

COMPACTION REQUIREMENTS TABLE

SEE GEOTECHNICAL ENGINEERING REPORT:	BENSON HIGH SCHOOL TENNIS COURT RECONSTRUCTION		
PREPARED BY:	THIELE GEOTECH		
ENGINEER:	BRETT PRIEBE		
PROJECT NO:	22149.01		
DATED:	MAY 5, 2022		
MAX. DEPTH OF LIFT FOR FILL (MEASURED LOOSE)	8"		
AREA	TEST	COMPACTION	MOISTURE
UTILITY TRENCH BACKFILL (DEPTH < 5')	STANDARD PROCTOR	95%	-3/+4
UTILITY TRENCH BACKFILL (DEPTH > 5')	STANDARD PROCTOR	95%	-3/+4
PCC PAVEMENT SUBGRADE (UPPER 12")	STANDARD PROCTOR	95%	-3/+4
MANHOLE + STRUCTURE BACKFILL (FULL DEPTH)	STANDARD PROCTOR	95%	-3/+4
SIDEWALK SUBGRADE (UPPER 6")	STANDARD PROCTOR	95%	-3/+4
ALL OTHER FILL (SEGMENTAL RETAINING WALL)	STANDARD PROCTOR	95%	-3/+4

NOTES:

- STANDARD PROCTOR SHALL BE DETERMINED IN ACCORDANCE WITH ASTM D 698.
- MODIFIED PROCTOR SHALL BE DETERMINED IN ACCORDANCE WITH ASTM D 1557.

EROSION CONTROL SUMMARY TABLE

TOTAL AREA OF SITE	24.53 AC.
DISTURBED AREA	0.09 AC.
EROSION CONTROL MEASURES:	SILT FENCE, MATTING, AND SEEDING

GRADING KEYNOTES

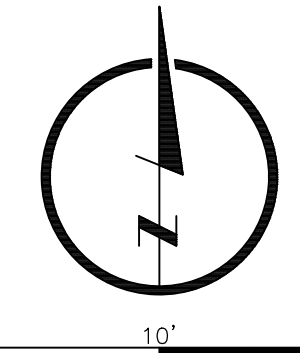
- SF1-SF3 CONSTRUCT SILT FENCE IN ACCORDANCE WITH CITY OF OMAHA STANDARD PLATE 101-02.

FURNISH AND INSTALL EROSION PREVENTION BLANKET PER STANDARD SPECIFICATION 9.5.23 OF THE OMAHA REGIONAL STORMWATER DESIGN MANUAL IN ALL AREAS RECEIVING SEEDING, SEE SHEET 5 FOR EXTENTS. BLANKET SHALL BE NORTH AMERICAN GREEN ROLLMAX DS150 OR APPROVED EQUIVALENT.

LAMP
RYNEARSON

LAMP RYNEARSON.COM

OMAHA, NEBRASKA
14710 W. DODGE RD. STE. 100 (402) 498-2498
NE AUTHORIZATION NO.: CAD130
FORT COLLINS, COLORADO
4710 INNOVATION DR. STE. 100 (970) 226-0342
KANSAS CITY, MISSOURI
8001 STATE LINE RD. STE. 200 (816) 361-0440
MO AUTH. NO.: E-2013011903 | LS-2016043127



JAMESON J DENNELL

LA-442

REMOVAL & GRADING PLAN

OPS BENSON HS TENNIS COURT ACCESS IMPROVEMENTS
5120 MAPLE ST, OMAHA, NE 68104



Know what's below.
Call before you dig.

REVISIONS

DESIGNER / DRAFTER

JAMIE DENNELL

DATE

MARCH 14, 2025

PROJECT NUMBER

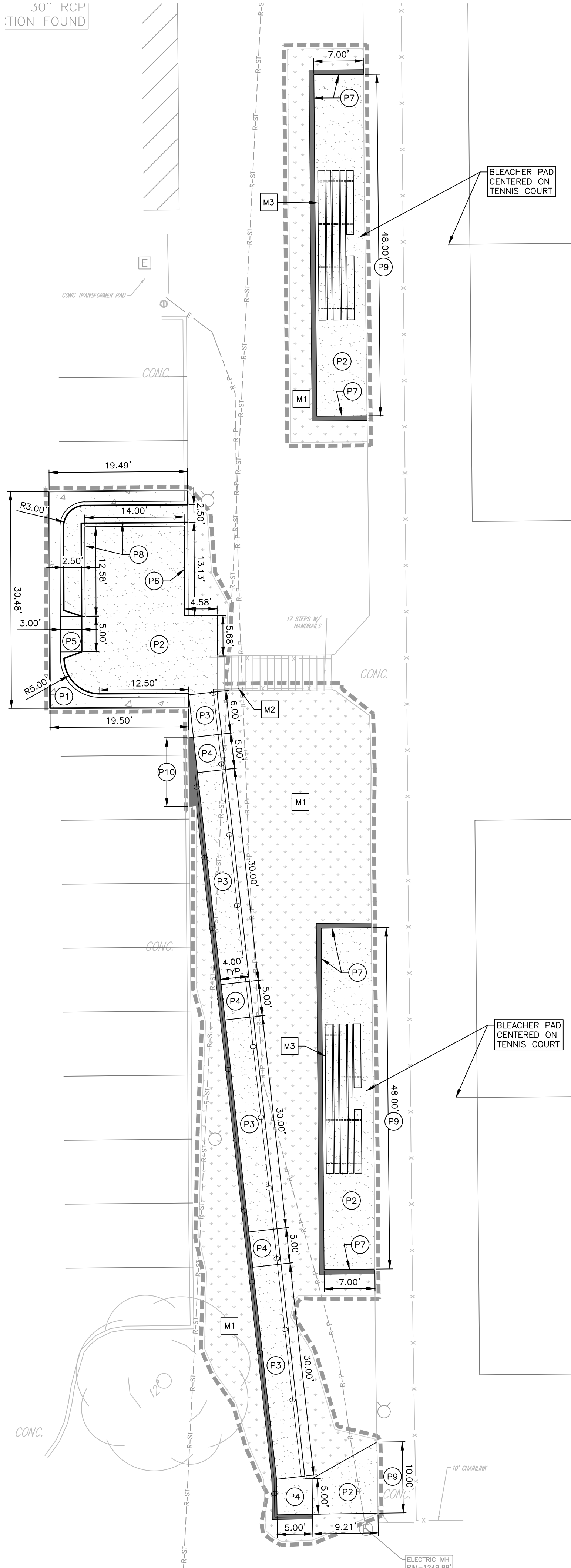
0124200.01-020

BOOK AND PAGE

SHEET

4 OF 5

30" RCP
TION FOUND



PORTLAND CEMENT CONCRETE (PCC) PAVING NOTES

- ALL PAVING ELEVATIONS ARE AT TOP OF SLAB UNLESS NOTED OTHERWISE.
- CURBS SHALL BE TYPE "A" IN ACCORDANCE WITH CITY OF OMAHA STANDARD PLATE 502-01 UNLESS NOTED OTHERWISE.
- PAVEMENT SUBGRADE TO A DEPTH OF 12 INCHES AND TO A WIDTH OF 4 FEET OUTSIDE PAVEMENT EDGES SHALL BE COMPACTED AS SPECIFIED IN THE COMPACTION REQUIREMENTS TABLE (SEE SHEET 4).
- BACKFILL BEHIND CURBS SHALL BE COMPACTED TO A MINIMUM IN-PLACE DENSITY OF 90% OF "MAXIMUM DENSITY" AS DETERMINED IN ACCORDANCE WITH ASTM D 1557 (90% MODIFIED PROCTOR).
- THE CONTRACTOR SHALL CONTACT THE SOILS ENGINEER TO OBSERVE THE SUBGRADE PRIOR TO PLACING PAVEMENT TO DELINEATE ANY AREAS WHERE SUBGRADE OVEREXCAVATION MAY BE REQUIRED.
- THE CONTRACTOR IS REFERRED TO THE FOLLOWING CITY OF OMAHA STANDARD PLATES:

501-01	CONCRETE PAVEMENT JOINTS
502-01	CONCRETE CURBS
504-01	CONCRETE CURB RAMPS
- CONCRETE SHALL BE IN ACCORDANCE WITH CITY OF OMAHA STANDARD SPECIFICATIONS FOR PUBLIC WORKS CONSTRUCTION 2024, SECTION 500. UNLESS NOTED OTHERWISE, ALL CONCRETE SHALL BE OPW 3500.
- CONCRETE PAVEMENT SHALL BE CURED USING A LIQUID-MEMBRANE FORMING COMPOUND AT THE CONCENTRATIONS AND APPLICATION RATES RECOMMENDED BY THE MANUFACTURER.
- WATER-REDUCING ADMIXTURE SHALL BE ADDED TO ALL HAND-PLACED AND FINISHED CONCRETE.
- JOINT PATTERNS
 - THE MAXIMUM PANEL DIMENSION IN FEET IS EQUAL TO THE LESSER OF TWICE THE PAVEMENT THICKNESS IN INCHES OR FIFTEEN FEET.
 - THE RATIO OF PANEL LENGTH TO WIDTH SHOULD NOT EXCEED 1.25:1.

SIDEWALK NOTES

- SIDEWALK SUBGRADE TO A DEPTH OF 6 INCHES AND TO A WIDTH OF 6 INCHES OUTSIDE OF SIDEWALK EDGES SHALL BE COMPACTED AS SPECIFIED IN THE COMPACTION REQUIREMENTS TABLE. (SEE SHEET 4)
- BACKFILL SHALL BE COMPACTED AS SPECIFIED IN THE COMPACTION REQUIREMENTS TABLE. (SEE SHEET 4)
- THE CONTRACTOR IS REFERRED TO THE FOLLOWING CITY OF OMAHA STANDARD PLATES:

503-01	SIDEWALK CONSTRUCTION
503-03	CURB WALL
504-01	CONCRETE CURB RAMPS
- THE CITY OF OMAHA HAS APPROVED THE FOLLOWING DETECTABLE WARNING PANELS.

503-01	IRON DOME BY ADA SOLUTIONS, INC.
503-03	DETECTABLE WARNING PLATE 4984 BY DETER FOUNDRY, INC.
504-01	DURALAST DETECTABLE WARNING PLATE BY EAST JORDAN IRON WORKS
	TUFTILE CAST IRON TILES BY TUFTILE, INC.
	ADVANTAGE TACTILE CAST IRON DETECTABLE WARNINGS
	DETECTABLE WARNING PLATE 4894 BY NEENAH FOUNDRY, INC.

ALL DETECTABLE WARNING PANELS LOCATED WITHIN PUBLIC RIGHT-OF-WAY SHALL BE REQUIRED TO USE NATURAL UNFINISHED CAST IRON DETECTABLE WARNING PANELS FOR ADA COMPLIANCE. DETECTABLE WARNING PANELS ARE APPROVED FOR USE WITHIN THE CITY OF OMAHA AND ITS THREE MILE EXTRATERRITORIAL JURISDICTION:

- IRON DOME BY ADA SOLUTIONS, INC.
 - DETECTABLE WARNING PLATE 4984 BY DETER FOUNDRY, INC.
 - DURALAST DETECTABLE WARNING PLATE BY EAST JORDAN IRON WORKS
 - TUFTILE CAST IRON TILES BY TUFTILE, INC.
 - ADVANTAGE TACTILE CAST IRON DETECTABLE WARNINGS
 - DETECTABLE WARNING PLATE 4894 BY NEENAH FOUNDRY, INC.
- CONCRETE SHALL BE IN ACCORDANCE WITH CITY OF OMAHA STANDARD SPECIFICATIONS FOR PUBLIC WORKS CONSTRUCTION, SECTION 500. UNLESS OTHERWISE NOTED, ALL CONCRETE SHALL BE OPW 3500.
 - CONCRETE PAVEMENT SHALL BE CURED USING A LIQUID-MEMBRANE FORMING COMPOUND AT THE CONCENTRATIONS AND APPLICATION RATES RECOMMENDED BY THE MANUFACTURER.
 - WATER-REDUCING ADMIXTURE SHALL BE ADDED TO ALL HAND-PLACED AND FINISHED CONCRETE.
 - ALL CURB RAMPS SHALL INCLUDE DETECTABLE WARNING TEXTURING AS PER CITY OF OMAHA STANDARD PLATE NO. 504-01.
 - JOINT SEALANT SHALL MEET THE REQUIREMENTS OF SECTION 500.02 (C) OF THE CITY OF OMAHA STANDARD SPECIFICATIONS FOR PUBLIC WORKS CONSTRUCTION EXCEPT AS MODIFIED HEREIN. BITUMASTIC JOINT SEALER IS NOT ALLOWED. POLYURETHANE OR SILICONE JOINT SEALER SHALL COLOR-MATCH THE NEW PCC PAVEMENT. SUBMIT COLOR SAMPLES TO THE OWNER FOR HIS APPROVAL PRIOR TO APPLICATION.

P PAVING KEYNOTES

- P1 CONSTRUCT 7" THICK PC CONCRETE PAVEMENT WITH TYPE A INTEGRAL CURB AND GUTTER.
- P2 CONSTRUCT 5" THICK PC CONCRETE PAVEMENT. PAVEMENT SHALL NOT EXCEED 1.8% CROSS SLOPE.
- P3 CONSTRUCT 5" THICK PC CONCRETE ADA RAMP WITH CURB WALL AND HANDRAIL, SEE DETAIL, THIS SHEET. RAMP SHALL NOT EXCEED 8.33% (1:12) LONGITUDINAL SLOPE AND 1.8% CROSS SLOPE PER ADA REQUIREMENTS. SEE DETAIL 1 & 2, THIS SHEET.
- P4 CONSTRUCT 5" THICK PC CONCRETE ADA LANDING. LANDING SHALL NO EXCEED 2.08% (1:48) LONGITUDINAL SLOPE AND 1.8% CROSS SLOPE PER ADA REQUIREMENTS.
- P5 CONSTRUCT PC CONCRETE CURB RAMP. RAMP SHALL BE 7" THICK. RAMP SHALL NOT EXCEED 8.33% (1:12) LONGITUDINAL SLOPE AND 1.8% CROSS SLOPE PER ADA REQUIREMENTS.
- P6 CONSTRUCT 6" WIDTH PC CONCRETE CURB. SEE DETAIL 3, THIS SHEET.
- P7 CONSTRUCT PC CONCRETE CURB WALL PER CITY OF OMAHA STANDARD PLATE 503-03.
- P8 CONSTRUCT PLAZA CURB. CURB TAPERS FROM 6" TO 0", SEE GRADING PLAN, SHEET 4 FOR ELEVATIONS. SEE DETAIL 4, THIS SHEET.
- P9 CONSTRUCT THICKENED EDGE WHERE NEW PAVEMENT ABUTS EXISTING. SEE DETAIL 5, THIS SHEET.
- P10 TAPER WALL FROM RAMP TO BACK OF EXISTING CURB.

M MISCELLANEOUS KEYNOTES

- M1 INSTALL SUPER TURF I SEED BY UNITED SEED, OR APPROVED EQUAL. SEE SEED NOTES, THIS SHEET.
- M2 FURNISH AND INSTALL HANDRAIL. SPLICE HANDRAIL WITH EXISTING WHERE DAMAGED PIECE WAS REMOVED.
- M3 INSTALL BLEACHERS (BY OWNER).

GENERAL LANDSCAPE NOTES

- CONTRACTOR TO VERIFY LOCATION OF ALL PROPOSED AND EXISTING VAULTS, ELECTRICAL DUCT BANKS, MANHOLES, CONDUIT AND PIPING, DRAINAGE STRUCTURES AND OTHER UTILITIES PRIOR TO COMMENCING WORK.
- CONTRACTOR SHALL NOT WILLFULLY INSTALL ANY PROPOSED LANDSCAPE IMPROVEMENTS WHEN CONFLICTS EXIST BETWEEN LANDSCAPE IMPROVEMENTS AND EXISTING OR PROPOSED UTILITIES OR SITE FEATURES SUCH AS WALKS, ROADS, BUILDINGS OR EXISTING TREES TO REMAIN.
- VERIFY LOCATION OF ALL BUILDINGS, WALLS, ROADS AND CURBS AFFECTING LANDSCAPE SCOPE OF WORK WITH CONTRACTOR ENGINEER'S DRAWINGS.
- ALL WORK PERFORMED WITHIN THE DRIP LINE OF TREES DESIGNATED "EXISTING TREES TO REMAIN" SHALL BE HAND LABOR.
- REFERENCE TO NORTH REFERS TO TRUE NORTH. REFERENCE TO SCALE IS FOR FULL-SIZED DRAWINGS ONLY. DO NOT SCALE FROM REDUCED DRAWINGS.
- DIMENSIONS TAKE PRECEDENCE OVER SCALES SHOWN ON DRAWINGS.
- WHERE NOT SHOWN ON THE PLANTING PLANS, SEE CONTRACTOR ENGINEER'S AND ARCHITECT'S DRAWINGS FOR BUILDING FOUNDATIONS SETBACKS, BOUNDARIES, SUBSURFACE AND ABOVE GRADE UTILITIES.

SEED NOTES

- MAINTENANCE: BEGIN MAINTENANCE OF ALL SEED AREAS IMMEDIATELY FOLLOWING INSTALLATION. MAINTENANCE TO INCLUDE WATERING, WEEDING, AND MOWING. MOW WHEN TURF HAS GROWN TO A HEIGHT BETWEEN 3 AND 4 INCHES. MOW TO A HEIGHT OF 2 TO 2-1/2 INCHES. MAINTENANCE PERIOD TO BE 30 DAYS. CONTRACTOR TO NOTIFY OWNER ONE WEEK PRIOR OF THE CONCLUSION OF THE MAINTENANCE PERIOD.
- LAWN AND TURF SEED, WHETHER IRRIGATED OR NON-IRRIGATED, SHALL BE INTERAGENCY BLUETAG CERTIFIED AND SHALL HAVE A MINIMUM GERMINATION RATE OF NINETY (90) PERCENT AND A PURITY OF NINETY-EIGHT (98) PERCENT, SEE LANDSCAPE SCHEDULE.
- ALL SEEDED AREAS SHALL RECEIVE FERTILIZER AND EROSION CONTROL MATTING CONFORMING TO THE REQUIREMENTS OF THE CITY OF OMAHA STANDARD SPECIFICATIONS FOR PUBLIC WORKS CONSTRUCTION.
- RESEEDING FOR DISTURBED AREAS OUTSIDE OF CONSTRUCTION LIMITS: THE CONTRACTOR WILL RESEED ALL AREAS DISTURBED DURING THE COURSE OF CONSTRUCTION. THIS ITEM WILL NOT BE PAID FOR SEPARATELY, BUT WILL BE CONSIDERED INCIDENTAL TO THE PLANTING OF NEW VEGETATION.

SCARIFIED AND CONDITIONED SOIL NOTES

- ALL NON-PAVED AND NON-BUILDING DISTURBED AREAS SHALL BE SCARIFIED BY COMPLETELY BREAKING UP THE SOIL TO A MINIMUM DEPTH OF 12".
- TILL AND CONDITION TOP 6" OF ALL AREAS TO RECEIVE LANDSCAPING.
- USE AN ORGANIC COMPOST MEETING THE REQUIREMENTS SPECIFIED BELOW.
- A THREE INCH DEEP LAYER OF COMPOST SHALL BE PLACED ON TOP OF ALL LANDSCAPE AREAS.
- THE COMPOST SHALL BE TILLED INTO THE EXISTING SOIL TO A DEPTH OF SIX INCHES.

COMPOST NOTES

USE A COMPOST MEETING THE REQUIREMENTS OF THIS SECTION. MATERIAL SHALL BE WELL COMPOSTED, FREE OF WEED SEEDS AND STABILIZED WITH REGARD TO OXYGEN CONSUMPTION AND CARBON DIOXIDE GENERATION. COMPOST SHALL HAVE A MOISTURE CONTENT THAT HAS NO VISIBLE FREE WATER OR DUST PRODUCED WHEN HANDLING THE MATERIAL. ONE HUNDRED PERCENT OF THE MATERIAL MUST PASS THROUGH A HALF INCH SCREEN. MANUFACTURED INERT MATERIAL SHALL BE LESS THAN 1.0% BY WEIGHT.

	MIN	MAX
ORGANIC MATTER CONTENT	35%	65%
C/N RATIO	—	25:1
PH	6.0	8.0
BULK DENSITY (LBS/CF)	40	50

WARRANTY:

THE CONTRACTOR SHALL WARRANTY PLANT MATERIALS FOR A PERIOD OF TWO (2) YEARS FROM THE DATE OF SUBSTANTIAL COMPLETION, AGAINST DEFECTS INCLUDING DEATH AND UNSATISFACTORY GROWTH, EXCEPT FOR DEFECTS RESULTING FROM ABUSE OR DAMAGE BY OTHERS, OR UNUSUAL PHENOMENA OR INCIDENTS WHICH ARE BEYOND THE CONTROL OF THE CONTRACTOR. WARRANTY COVERS A MAXIMUM OF ONE REPLACEMENT PER ITEM.

CONTRACTOR QUALIFICATIONS

- THE CONTRACTOR SHALL BE CERTIFIED AND HAVE AT LEAST 3 YEARS OF LANDSCAPING EXPERIENCE INSTALLING SIMILAR TYPES OF PROJECTS.

LANDSCAPE SCHEDULE

SYMBOL	CODE	DESCRIPTION	PRODUCT NAME	MANUFACTURER	CONTACT	NOTES
	M1	TURF SEED	SNAP BACK RR TURF	UNITED SEED	WWW.UNITEDSEED.COM	INSTALL PER SUPPLIER'S SPECIFICATIONS.

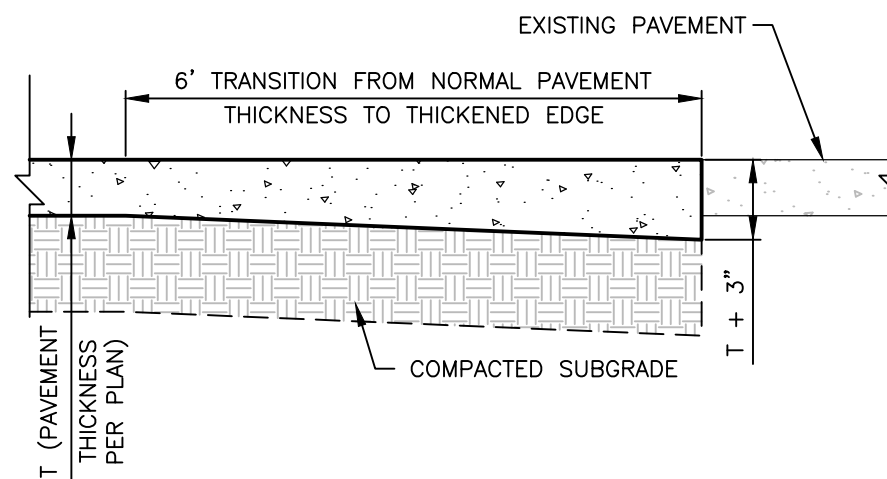


M1

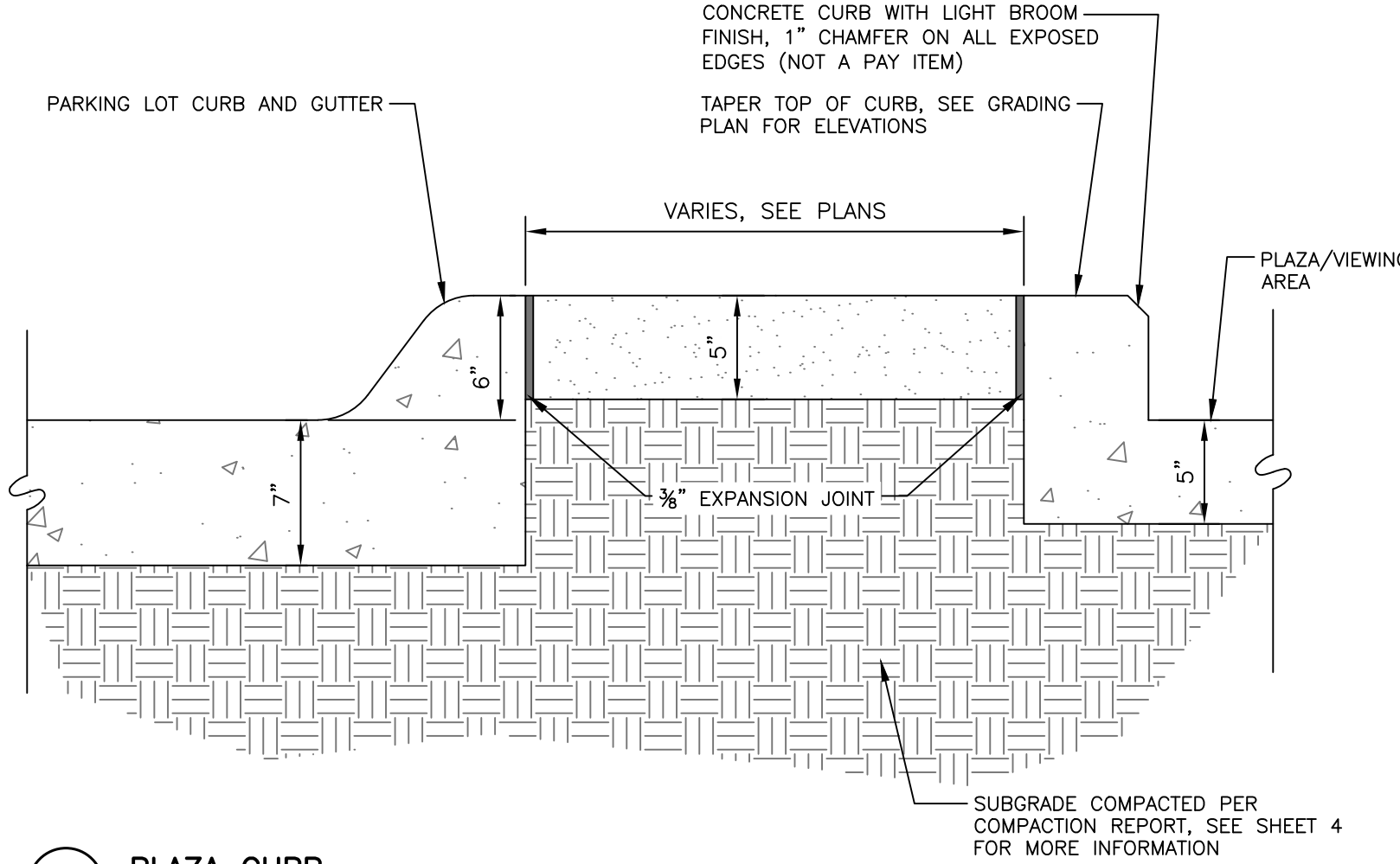
TURF SEED
SNAP BACK RR TURF
FESCUE BLEND (OR
APPROVED EQUAL)

UNITED SEED
WWW.UNITEDSEED.COM

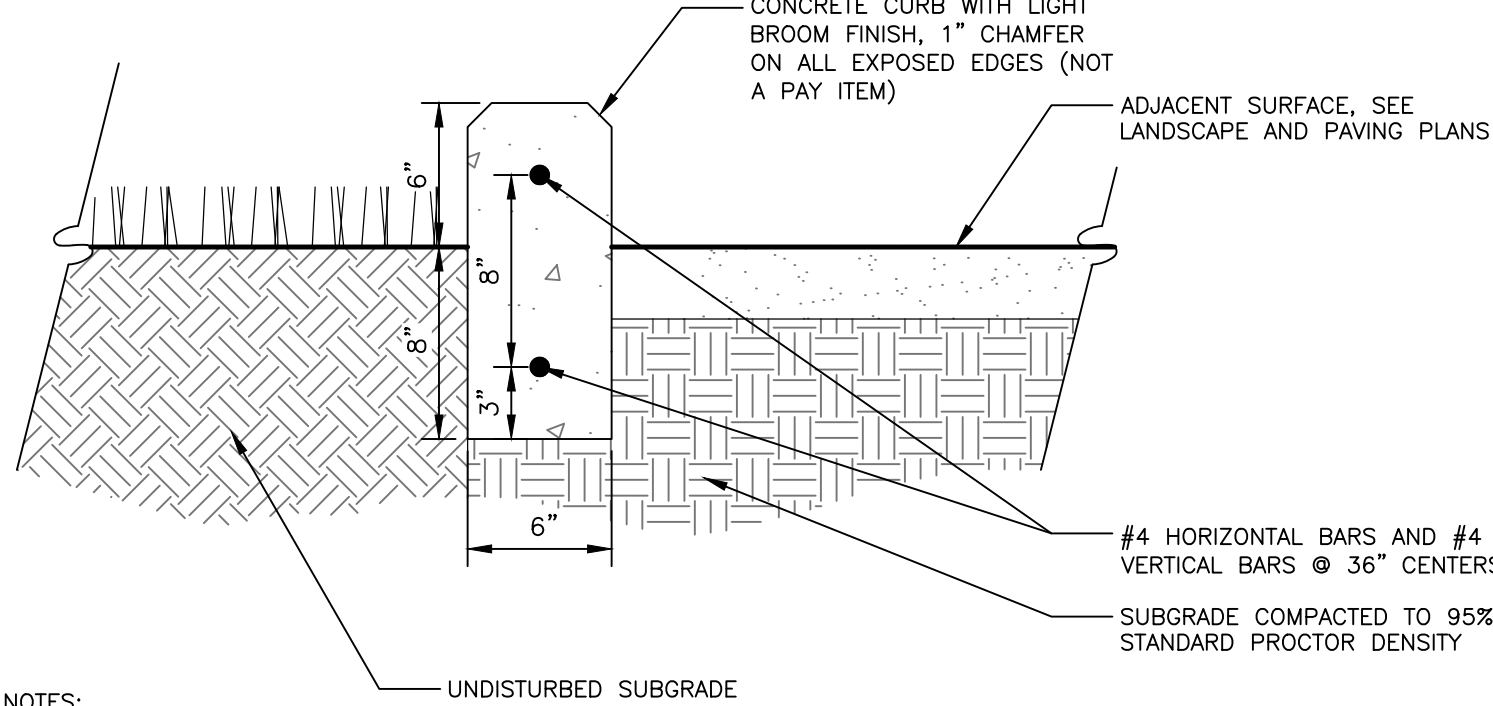
INSTALL PER
SUPPLIER'S
SPECIFICATIONS.



5 THICKENED EDGE DETAIL
SCALE: NOT TO SCALE



4 PLAZA CURB
SCALE: 1 1/2" = 1'-0"

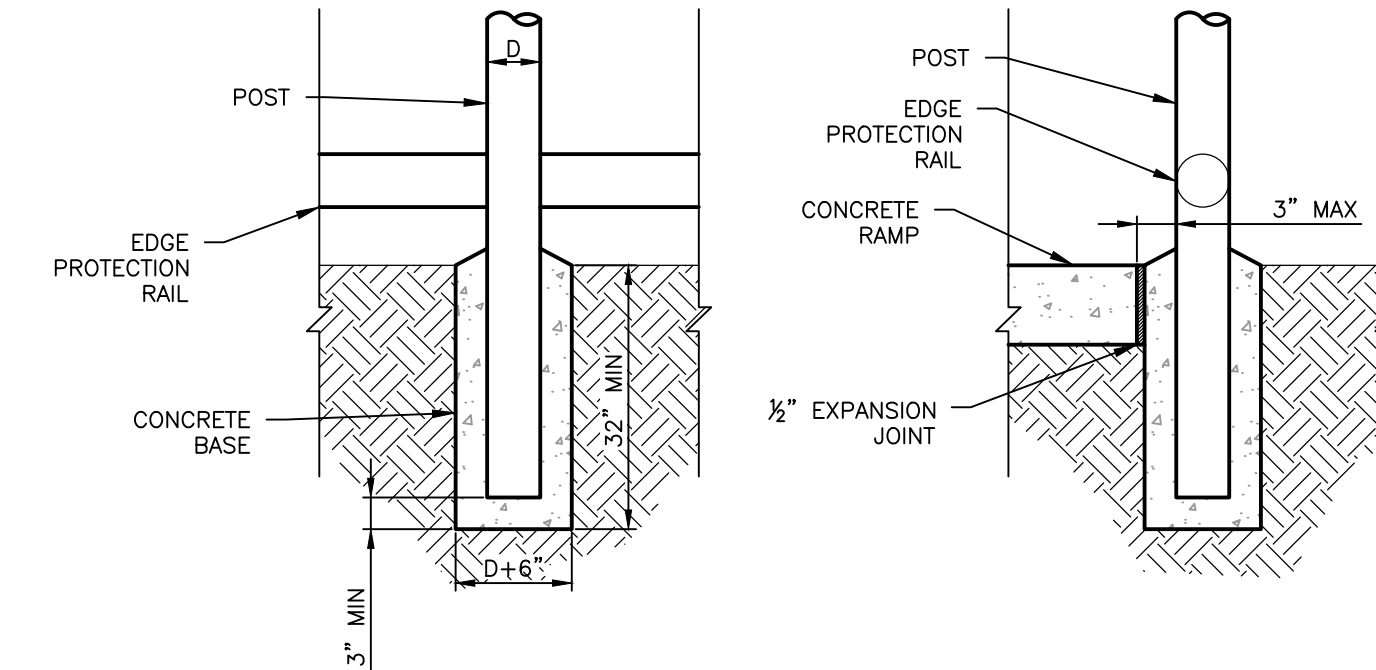


NOTES:
1. PROVIDE EXPANSION JOINTS AT 6' O.C. AND CONTORL JOINTS AT 24' O.C.
2. MINIMUM BURY DEPTH ON ALL REBAR SHALL BE 2'-1/2". UNLESS OTHERWISE NOTES. REBAR SHALL BE ACCURATELY PLACED BEFORE POURING CONCRETE. DO NOT FLOAT REBAR IN PLACE.
3. ALL CONCRETE SHALL HAVE A MINIMUM COMPRESSIVE STRENGTH OF 3,500 PSI AT 28 DAYS.

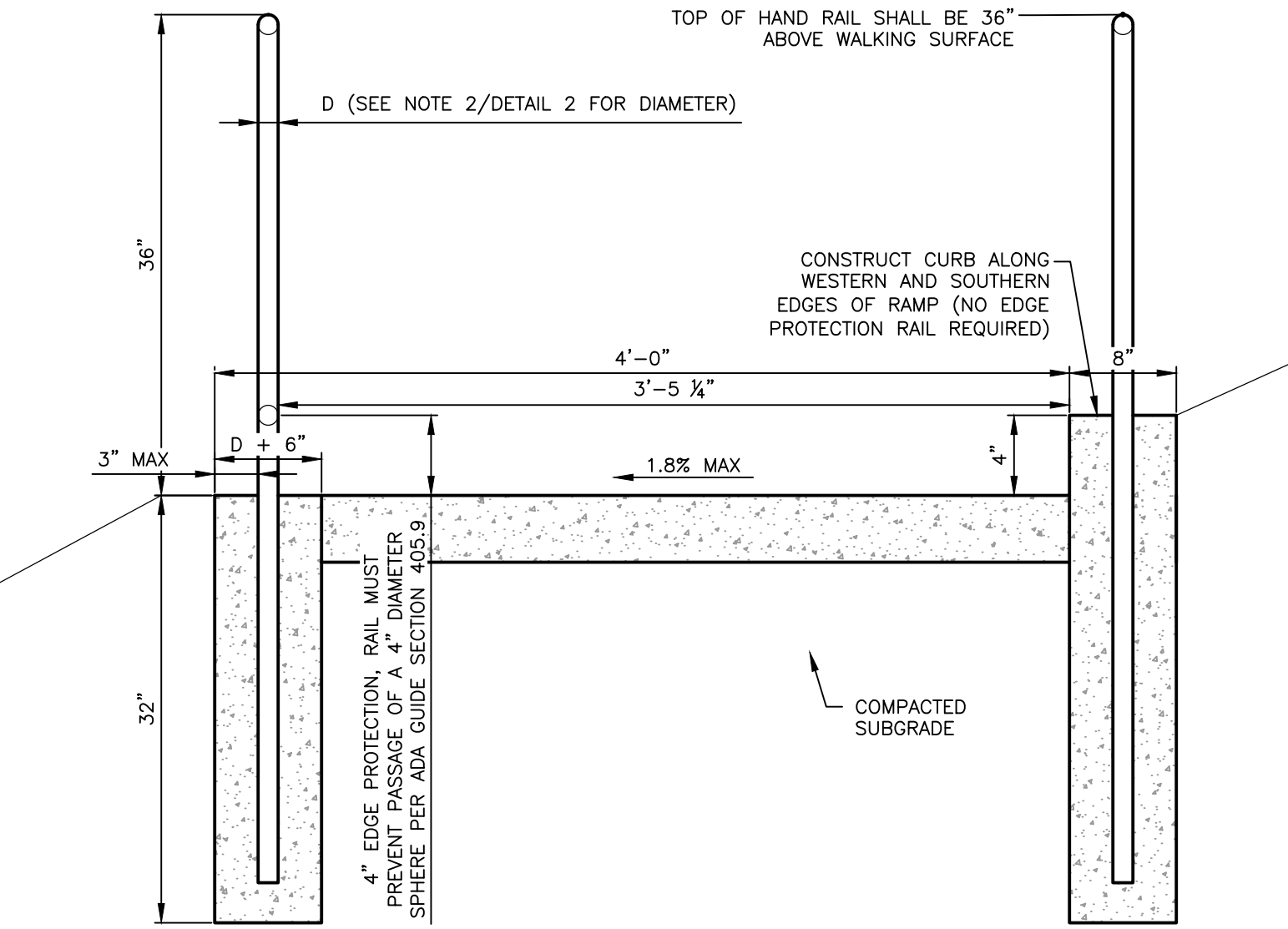
3 6" WIDTH PC CONCRETE CURB
SCALE: 1 1/2" = 1'-0"

TYPICAL STEEL HANDRAIL NOTES:

- HAND RAIL SUPPORTS/POSTS SHALL BE SPACED AT 8' MAXIMUM (TYPICAL).
- HAND RAIL AND POST SHALL BE 1 1/2" - 2" IN DIAMETER PER ADA GUIDE SECTION 405.8 AND 505.7.1
- THE TOP OF ALL HAND RAILS SHALL BE 36" ABOVE THE ADJACENT RAMP SURFACE (TYPICAL).
- THE CONTRACTOR SHALL SUBMIT ONE SHOP DRAWING PACKAGE THAT INCLUDES ALL FABRICATED HAND RAILINGS AND POSTS TO THE ENGINEER/ARCHITECT FOR REVIEW PRIOR TO CONSTRUCTION.



2 HAND RAIL DETAIL
SCALE: NOT TO SCALE

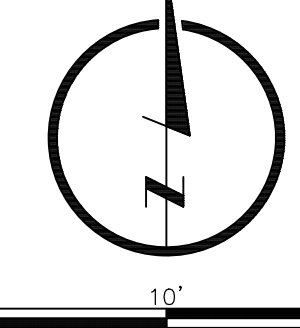


1 TYPICAL RAMP CROSS SECTION
SCALE: NOT TO SCALE

LAMP
RYNEARSON

LAMPRYNEARSON.COM

OMAHA NEBRASKA
14710 W. DODGE RD. STE. 100 (402) 498-2498
NE AUTHORIZATION NO.: CAD130
FORT COLLINS, COLORADO
4710 INNOVATION DR. STE. 100 (970) 228-0342
KANSAS CITY, MISSOURI
8001 STATE LINE RD. STE. 200 (816) 361-0440
MO AUTH. NO.: E-2013011903 LLS-2010043127



JAMESON J DENNELL

LA-442

PAVING PLAN & CONSTRUCTION DETAILS

OPS BENSON HS TENNIS COURT ACCESS IMPROVEMENTS
5120 MAPLE ST, OMAHA, NE 68104



Know what's below.
Call before you dig.

ALL UTILITIES ARE SHOWN
BASED ON THE INFORMATION
AVAILABLE TO THE ENGINEER.
THERE IS NO GUARANTEE AS TO
THE LOCATION, DEPTH, AND
SIZE OF EACH FACILITY. IT IS
THE RESPONSIBILITY OF THE
CONTRACTOR TO LOCATE
ALL UTILITIES PRIOR TO CONSTRUCTION.

REVISIONS

NO.	DESCRIPTION

DESIGNER / DRAFTER

JAMIE DENNELL

DATE

MARCH 14, 2025

PROJECT NUMBER

0124200.01-020

BOOK AND PAGE

SHEET

5 OF 5